



The University of Belgrade – Faculty of Forestry and
Zhejiang A&F University – College of Forestry and Biotechnology



SERBIAN-CHINESE FORESTRY FORUM

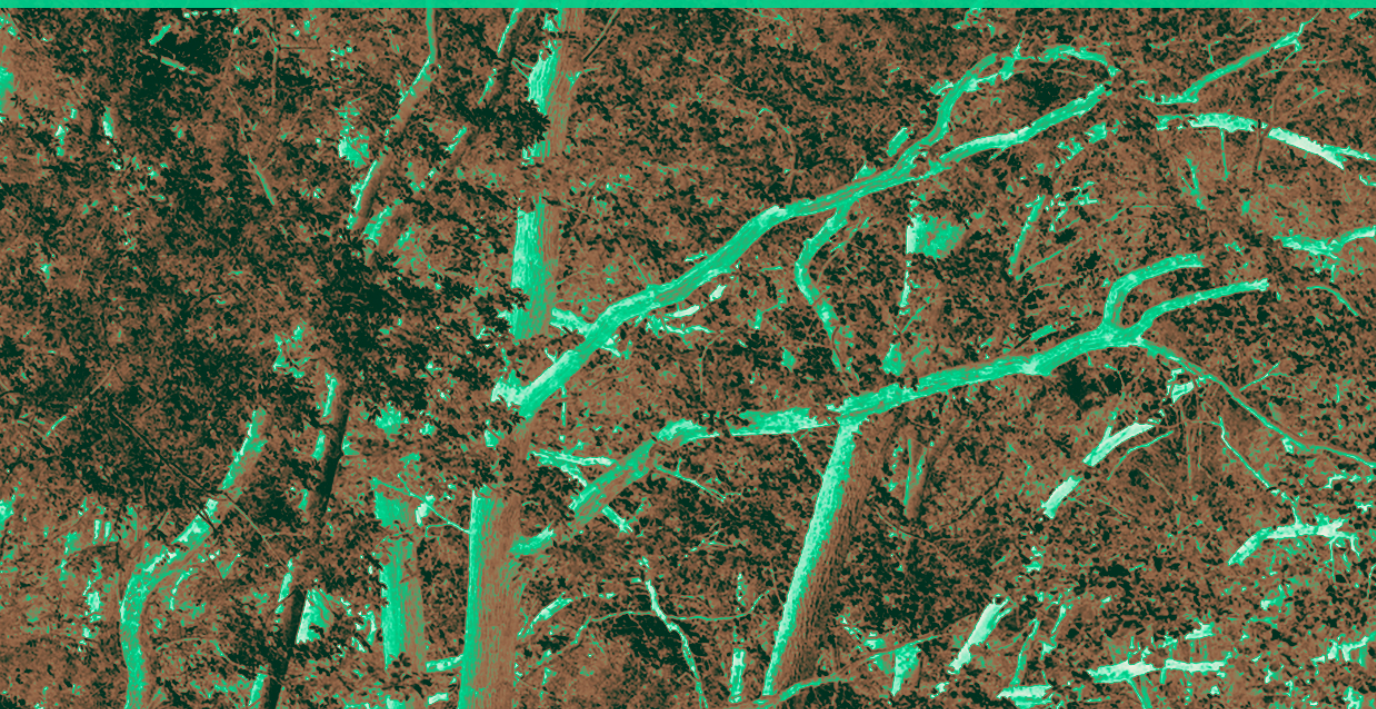
FORESTS FOR THE FUTURE: CHALLENGES,
OPPORTUNITIES AND INTEGRATED
APPROACHES

FORUM PROGRAMME

December 10-12, 2025,
Faculty of Forestry,
Kneza Višeslava 1, Belgrade



SERBIAN-CHINESE
FORESTRY FORUM
FORESTS FOR THE
FUTURE





PROGRAMME

WEDNESDAY, 10. December, 2025.

Amphitheatre, Faculty of Forestry, Kneza Višeslava 1



Online access -

<https://zoom.us/j/2258270831?pwd=4b43gcM6hcWkL0dqxt0EVma54wkTWO.1&omn=96087357067>

9:00-9:45	Registration
10:00 – 10:10	Address by the Dean, Faculty of Forestry, University of Belgrade
10:10 – 10:20	Address by the Dean, College of Faculty of Forestry and Biotechnology, Zhejiang A&F University
10:20 – 11:00	Address by Officials
11:00 – 11:15	About the Serbian-Chinese Forestry Forum
11:15-11:30	Group photograph
11:30-12:00	Coffee break





WEDNESDAY, 10. December, 2025.

Amphitheatre, Faculty of Forestry, Kneza Višeslava 1

Online access -

<https://zoom.us/j/2258270831?pwd=4b43gcM6hcWkL0dqxt0EVma54wkTWo.1&omn=96087357067>

12:00 – 14:30	Topic: The State and Challenges of Forestry in Serbia and China Chairpersons: Ivana Bjedov and Ivan Milenković
	Slobodan D. Milanović, Emilija S. Milanović, Zoran S. Trailović, MACHINE LEARNING APPROACH TO WILDFIRE OCCURRENCE PROBABILITY MODELLING IN SERBIA
	Rubei Hou SPATIOTEMPORAL DYNAMICS AND DROUGHT RESPONSES OF CHINESE FORESTS REVEALED BY KNDVI AND SIF – online
	Lide Pan EARLY CHARACTERISTICS OF HYDRAULIC STRUCTURE AND CANOPY TEMPERATURE IN MASSON PINES AFFECTED WITH PINE WILT DISEASE – online
	Yi ZHANG RESISTANCE AND RESILIENCE OF MOSO BAMBOO OF DIFFERENT AGES TO RECURRENT SUMMER DROUGHTS OVER MULTIPLE YEARS – online
	WANG Yixiang BUILDING AN ADAPTIVE FOREST MANAGEMENT SYSTEM BASED ON CARBON NEUTRALITY TARGETS
	Marko Perović TREE SPECIES NATIVE TO CHINA IN DENDROFLORA OF SERBIA
	Renata Gagić-Serdar THE BASIC PARALLELS BETWEEN FORESTRY PRACTICES IN THE PEOPLE'S REPUBLIC OF CHINA'S HABIT, AS WELL AS THE BASIC DIAMETRICAL CONTRASTS WITH THE SAME IN THE ECONOMY AND NATURE PROTECTION IN SERBIA
	Marko Marinković, Bojan Tubić A NATURE - BASED SOLUTION FOR ECOSYSTEM RESTORATION – THE CASE STUDY OF PROJECT REBIOFORESTS





	<p>MEI Tingting CHARACTERISTICS AND INFLUENCING MECHANISMS OF THE FOREST CARBON-WATER COUPLING PROCESS</p>
	<p>Žaklina Marjanović¹, Lana Kukobat¹, Nikola Šušić¹, Goran Trivan, Slobodan Krnjajić, Zhun Mao, Lei Wang, Frank Berninger⁴, Yong Pang, Tao Yu, Alexia Stokes SERBIA IN THE EU-FUNDED PROJECT ECO2ADAPT — CONNECTING EUROPEAN AND CHINESE INSTITUTIONS IN FINDING SOLUTIONS FOR FOREST RESILIENCE IN THE CHANGING CLIMATE</p>
	<p>Aleksandar Golubović METHODOLOGICAL FRAMEWORK OF THE NATIONAL FOREST INVENTORIES OF SERBIA AND CHINA</p>
	<p>Predrag Miljković, Snežana Belanović Simić, Jelena Beloica, Nikola Živanović MONTHLY DYNAMICS OF POTENTIALLY TOXIC ELEMENTS IN THE BEDLOAD IN A CATCHMENT IN CENTRAL SERBIA</p>
	<p>Jelena Tomičević-Dubljević, Milena Trmčić, Ivana Bjedov, Marija Nešić, Dragana Čavlović, Ivana Živojinović, Oliver Tošković, Ivana Lozjanin, Anna Maria Palsdottir, Slavica Čepić ASSESSING THE RESTORATIVE QUALITIES OF URBAN AND SUBURBAN FORESTS THROUGH A GUIDED NATURE-BASED INTERVENTION</p>
LUNCH 14:30 – 15:30	





Thursday, 11. December, 2025.

Amphitheatre and Ceremonial Hall - parallel sessions

Faculty of Forestry, Kneza Višeslava 1



Online access -

<https://zoom.us/j/2258270831?pwd=4b43gcM6hcWkL0dqxtoEVma54wkTWo.1&omn=96087357067>

Amphitheatre	<p>Topic: New and Green Technologies and Knowledge in Forestry, Wood Tech. Landscape Architecture, Horticulture, and Ecological Engineering</p> <p>Chairpersons: Mirjana Todosijević and Marko Perović</p>
10:00 – 11:30	<p>Simiao Ni BENCHMARKING LIDAR-BASED APPROACHES FOR ESTIMATING ABOVEGROUND CARBON STORAGE IN CHINESE FIR PLANTATIONS: TOWARDS AN OPTIMAL OPERATIONAL MAPPING FRAMEWORK – online</p>
	<p>Yirong WANG Multi-scenario carbon storage analysis based on PLUS model and InVEST model: a case study of Zhejiang province, China - online</p>
	<p>Milica Caković Milosavljević, Aleksandar Baumgertel, Sara Lukić REMOTE SENSING–BASED ASSESSMENT OF SOIL EROSION AND THE EFFECTIVENESS OF BIOLOGICAL CONTROL MEASURES IN THE GRDELICA GORGE AND VRANJSKA VALLEY WATERSHED</p>
	<p>Zhu Chunao INDIVIDUAL TREE DETECTION AND SEGMENTATION FROM UNMANNED AERIAL VEHICLE-LIDAR DATA BASED ON A TRUNK POINT DISTRIBUTION INDICATOR</p>
	<p>Niu Jinhua, Xie Jiangbo A SYNTHESIS OF RECENT ADVANCES IN VISUALISING LEAF HYDRAULIC FAILURE: LINKING WATER DYNAMICS TO PHOTOSYNTHETIC MORTALITY</p>
	<p>Sandra Mitrović, Dragana Čavlović, Luka Bajić DESIGNING URBAN LANDSCAPES: PLANNING AND DESIGN CHALLENGES FOR URBAN FOREST LJEŠKOPOLJSKA GORICA IN PODGORICA, MONTENEGRO</p>
	<p>Stefan Miletić, Jelena Beloica VEGETATION-BASED WILDFIRE RISK ASSESSMENT IN SERBIA: SPATIAL PATTERNS AND IMPLICATIONS FOR IMPROVING THE MEDALUS MODEL</p>
	<p>Yang Lv, Yan Jin, Caixian Tang, Yixiang Wang STRIP CLEAR-CUTTING TRANSFORMATIONS INCREASE SOIL N₂O EMISSIONS IN ABANDONED MOSO BAMBOO FORESTS</p>



SERBIAN-CHINESE FORESTRY FORUM

FORESTS FOR THE FUTURE: CHALLENGES, OPPORTUNITIES AND INTEGRATED APPROACHES

December 10-12, 2025.
Faculty of Forestry,
Kneza Višeslava 1, Belgrade





	Mengyi Cai, Jiangbo Xie SEEING VS. MEASURING: DISCREPANCIES AND CONVERGENCE BETWEEN VISUAL AND HYDRAULIC TECHNIQUES IN ESTIMATING XYLEM CAVITATION RESISTANCE
11:30 – 12:00	Coffee break

12:00-13:40	Topic: Responses and Adaptation of Trees and Forests to Environmental Stress Chairpersons: Danijela Đunisijević Bojović and Tijana Vulević
	Kosta Djurica, Nenad Radaković, Branko Stajić, Marko Kazimirović, Vojislav Dukić POTENTIAL OF SESSILE OAK FROM THE AREA OF THE NATIONAL PARK “ĐERDAP” FOR DENDROCHRONOLOGICAL AND DENDROCLIMATOLOGICAL RESEARCH
	Jiacong Yu, XueJian Li, HuaQiang Dua, Fangjie Mao, YanXin Xu, Zihao Huang, Yinyin Zhao, Lujin Lv, Meixuan Song, Lei Huang, Dejin Dong SOLAR-INDUCED FLUORESCENCE-BASED PHENOLOGY OF SUBTROPICAL FORESTS IN CHINA AND ITS RESPONSE TO CLIMATE FACTORS
	Qiao Yina, Yang Wei, Shi Mengdi, Zhang Xitang, Qin Yuqian, Hao Xinzhong STUDY ON DBH-HEIGHT GROWTH MODEL OF PINUS SYLVESTRIS PLANTATION IN YULIN SANDY AREA
	Siyang Liu, Junhong Zhang THE REGULATORY ROLES OF PbbHLH74 IN RESPONSE TO DROUGHT STRESS IN PHOEBE BOURNEI
	Li Jianwei, Zuanhao Gao PHYSIOLOGICAL AND BIOCHEMICAL RESPONSES OF PECAN SEEDLINGS TO DROUGHT STRESS
	Chenlei Yang, Wenhui Shi BIOLOGICAL COORDINATION STRATEGIES OF MOSO BAMBOO (<i>PHYLLOSTACHYS EDULIS</i>) IN RESPONSE TO LOW PHOSPHORUS STRESS
	Jiahua Chen, Wenzhe Dai, Haitao Shi, Yufeng Zhou, Guangsheng Chen, Sheng Yang, Xin Peng and Yongjun Shi CHARACTERISTICS OF BIOMASS AND CARBON STOCK ACCUMULATION AND BIOMASS ESTIMATION MODEL IN KANDELIA OBOVATA MANGROVES AT THE NORTHERN EDGE OF ITS DISTRIBUTION IN CHINA
	Yeqing Fan, Guomo Zhou, Huaqiang Du, Yufeng Zhou, Xiaojun Xu, Yongjun Shi EFFECTS OF TERRAIN ON STAND STRUCTURE AND VEGETATION CARBON STORAGE OF PHYLLOSTACHYS EDULIS FOREST





	Xiaojun Xu, Danna Chen ESTIMATING GLOBAL ANNUAL GPP BASED ON SATELLITE-DERIVED PHENOLOGY AND MAXIMAL CARBON UPTAKE CAPACITY
	Du Zheqi FOREST TRANSFORMATION INCREASES SOIL N ₂ O FLUXES IN AN UNMANAGED MOSO BAMBOO FOREST
13:40–14:30	Lunch

14:30 – 15:30	Topic: Responses and Adaptation of Trees and Forests to Environmental Stress Chairpersons: Snežana Belanović Simić and Slobodan Milanović
	Jia Yuting DYNAMICS OF PHENOLOGY AND ITS RESPONSE TO CLIMATE VARIABLES IN A WARM-TEMPERATE MIXED PLANTATION
	Zeng Beilai HYDRAULIC-PHOTOSYNTHETIC COUPLING DETERMINES DROUGHT RESISTANCE DENSITY THRESHOLD IN MOSO BAMBOO
	Chen Quian ESTIMATING GLOBAL ANNUAL GROSS PRIMARY PRODUCTION BASED ON SATELLITE-DERIVED PHENOLOGY AND MAXIMAL CARBON UPTAKE CAPACITY
	Guo Haotian, Wang Yixiang CHANGES IN SUITABLE HABITATS AND ECOLOGICAL NICHES OF CUNNINGHAMIA LANCEOLATA UNDER CLIMATE CHANGE SCENARIOS
	Huawei Wu, Huiru Lv, Guozhong Wang, Tingxiu Liu, Wu Chen, Yufeng Zhou, Yongjun Shi SCALING EFFECTS OF STAND STRUCTURE CHARACTERISTICS AND CARBON STOCK ESTIMATION IN SUBTROPICAL VEGETATION: AN EXAMPLE FROM ZHEJIANG PROVINCE, CHINA
	YI ZHANG RESISTANCE AND RESILIENCE OF BAMBOO OF DIFFERENT AGES TO INTERMITTENT SUMMER DROUGHTS OVER MULTIPLE YEARS RESEARCH
15:30-16:00	Coffee break



Amphitheatre	Topic: Forests and Human Well-being – Ecological, Economic, and Social Dimensions Chairpersons: Marija Đurković and Branko Kanjevac
16:00-17:30	Zoran Poduška, Snežana Stajić, Suzana Mitrović, Branka Pavlović, Jovana Cvetković, Milan Kabiljo, Jelena Nedeljković, Dragan Nonić INTRAPRENEURSHIP IN PUBLIC FOREST ENTERPRISES AS LEVERAGE FOR EMPLOYEE INNOVATIVENESS
	Mirjana Tešić, Aleksandar Lisica, Nadežda Stojanović, Vesna Đukić, Tijana Milićević ASSESSMENT OF THE POTENTIAL RISK OF SOIL CONTAMINATION BY HEAVY METALS: THE BELGRADE CASE STUDY
	Tijana Milićević, Mira Aničić Urošević, Gordana Jovanović, Predrag Vasić, Tatjana Jakšić, Aleksandar Popović ASSESSMENT OF ENVIRONMENTAL AND HUMAN HEALTH RISKS OF POTENTIALLY TOXIC ELEMENTS IN SOILS AND MOSSES
	Jovan Dobrosavljević, Čedomir Marković, Slobodan Milanović, Ivan Milenković PROACTIVE FOREST BIOSECURITY: THE ROLE OF SENTINEL PLANTATIONS AND CROSS-BORDER COLLABORATION
	Ljubica Simanić, Siniša Polovina, Ratko Ristić, Vukašin Milčanović ANALYSIS OF THE IMPACT OF LAND COVER CHANGES AND CLIMATE PROJECTIONS ON THE SPATIAL DISTRIBUTION OF SOIL EROSION: A CASE STUDY OF THE STUBO–ROVNI RESERVOIR
	Xinzhang Song, Xiaofeng Chen, Guomo Zhou, Hong Jiang, Changhui Peng, Jianhua Lv, Quan Li, Tingting Cao, Man Shi, Lei Deng, Wenhua Xiang, Wenfa Xiao CARBON SEQUESTRATION CAPACITY OF MOSO BAMBOO FORESTS
	Angelina Novaković BALANCING PASTORAL TRADITIONS AND FOREST PROTECTION: INSIGHTS FROM TARA NATIONAL PARK, SERBIA
17:30-18:00	Discussion
19:00	Dinner and social gathering Restaurant – Hotel „ORAŠAC“, Luke Vojvodica 25c





Ceremonial Hall	POSTER PRESENTATIONS
12:00-13:35	Chairpersons: Snežana Belanović Simić and Dragan Borota
	Topic: The State and Challenges of Forestry in Serbia and China Tijana Vulević, Katarina Lazarević, Mirjana Todosijević, Natalija Momirović, Vesna Nikolić Jokanović, Ranka Kovačević ASSESSMENT OF FOREST CHANGE AND MINING EXPANSION USING HIGH-RESOLUTION LAND COVER DATA – THE CASE OF SERBIA
	Milica Caković Milosavljević, Katarina Lazarević, Jelena Beloica ECOSYSTEM SERVICES OF NATURE PARK PALIĆ AND LUDAŠ – BETWEEN NATURE PROTECTION AND SUSTAINABLE DEVELOPMENT
	Topic: New and Green Technologies and Knowledge in Forestry, Wood Tech. Landscape Architecture, Horticulture, and Ecological Engineering
	Aleksandar Jovanović, Milica Mišić, Ivana Mikavica, Jelena Dimitrijević, Milena Obradović, Marija Koprivica, Miroslav Sokić WASTE PEELS AS SOURCE FOR GREENER MATERIALS: TREATMENT OF WASTEWATERS FROM DYEING INDUSTRY
	Snežana Belanović Simić, Predrag Miljković, Stefan Miletić, Jelena Beloica THE IMPACT OF LONG-TERM AEROPOLLUTION ON FOREST SOILS IN THE AREA OF MT. GOČ
	Nenad Šurjanac, Aleksandar Lučić, Ivana Živanović INTEGRATED ASSESSMENT OF THE PHYSIOLOGICAL AND MECHANICAL CONDITION OF TREES USING MULTISPECTRAL UAV ANALYSIS, 3D PHOTOGRAMMETRY, AND ACOUSTIC TOMOGRAPHY (ARBOTOM): A LINDEN TREE CASE STUDY
	Sofija Parezanović, Jana Joksimović, Aleksandar Anđelković, Tijana Vulević, Vesna Nikolić Jokanović APPLICATION OF FIELD AND LABORATORY METHODS IN DETERMINING SOIL MOISTURE CONTENT IN FOREST ECOSYSTEMS
	Kristina Đorđević, Dragana Skočajić, Dragana Čavlović, Jovana Devetaković, Ivana Bjedov MODEL FOR SECURING PLANTING MATERIAL OF NATIVE WOODY SPECIES USING EXISTING GREEN INFRASTRUCTURE AS A RESOURCE
	Marija Pešikan, Jovana Petrović, Nenad Stavretović ENHANCING SOCIAL COHESION IN THE URBAN LANDSCAPE THROUGH THE GREENING OF URBAN RUINS
Topic: Responses and Adaptation of Trees and Forests to Environmental Stress	





	<p>Branko Kanjevac, Violeta Babić, Jovan Dobrosavljević, Janko Ljubičić, Miloš Račić, Nikola Martać, Branka Pavlović RECOVERY AND RESTORATION OF ICE-STORM-DAMAGED FORESTS IN EASTERN SERBIA</p> <p>Danijela Đunisijević-Bojović, Marijana Milutinović, Marija Marković, Jasmina Popović, Vuk Maksimović, Ljiljana Kostić Kravljanac PHYSIOLOGICAL RESPONSE OF THE INVASIVE SPECIES <i>Ailanthus altissima</i> TO LOW PHOSPHORUS AVAILABILITY IN ALKALINE SOIL</p> <p>Filip Maksimović, Mirjana Šijačić-Nikolić, Dragana Skočajić, Kristina Đorđević, Marina Nonić CLONAL TRIAL OF FIELD ELM AS A BASIS FOR EX SITU GENE POOL CONSERVATION IN THE PROTECTED AREA "KOSMAJ" (BELGRADE, SERBIA)</p> <p>Ljubica Mijatović, Ivona Kerkez Janković, Jovana Devetaković, Vladan Ivetić OAK SEEDLING ESTABLISHMENT WITH TREE SHELTERS ON ABANDONED AGRICULTURAL LAND</p> <p>Ivona Kerkez Janković, Mirjana Šijačić-Nikolić, Filip Maksimović, Vladan Popović EARLY MORPHOLOGICAL VARIATION OF <i>Salix alba</i> CLONES IN A CONSERVATION-ORIENTED PROGENY TEST</p>
Ceremonial Hall	<p style="text-align: center;">POSTER PRESENTATIONS</p> <p>Topic: Forests and Human Well-being – Ecological, Economic, and Social Dimensions</p> <p>Chairpersons: Nikola Živanović and Dragan Borota</p>
12:00-13:35	<p>Filip Vasić, Snežana Belanović-Simić, Jelena Beloica, Dragana Čavlović, Nikola Jovanović RAMSAR SITES PROTECTION IN SERBIA: EVALUATION OF NATIONAL LAWS AND RECOMMENDATIONS FOR POLICY ENHANCEMENT</p>
	<p>Ana Marjanović Jeromela, Efthymia Alexopoulou, Jelena Ovuka, Brankica Babec AGROFORESTRY AND INTERCROPPING SYSTEMS ON MARGINAL LANDS: INSIGHTS FROM THE MIDAS HORIZON EUROPE PROJECT</p>
	<p>Katarina Lazarević, Mirjana Todosijević, Tijana Vulević, Vesna Nikolić Jokanović, Milica Caković Milosavljević FORESTS FOR THE FUTURE: ECOSYSTEM SERVICES POTENTIAL OF THE LIKODRA WATERSHED</p>
	<p>Milijana Cvejić PROPOSAL FOR THE REVITALISATION OF THE ZVEZDARA URBAN FOREST: A COMPARATIVE APPROACH INSPIRED BY NORWEGIAN MODELS</p>
	<p>Marija Pešikan, Jovana Petrović, Nenad Stavretović</p>



	ANALYSIS OF RECREATIONAL ACTIVITIES IN THE AREA OF OUTSTANDING NATURAL LANDSCAPE "ADA CIGANLIJA"
	Milica Marčeta, Ljiljana Keča REGIONAL DIFFERENCES IN THE PRODUCTION OF WOOD ASSORTMENTS IN SERBIA IN THE CONTEXT OF SUSTAINABLE BIOECONOMY
13:35 – 14:30	LUNCH
14:30 – 15:30	Topic: The Role of Young Researchers and Innovation in the Future of Forestry – Presentations Chairpersons: Jelena Beloica and Marko Perović
	Mihajlo Marković, Branko Kanjevac, Violeta Babić, Dragan Borota, Vanja Stojanović DEFINING THE INITIAL SUCCESS OF FOREST REGENERATION THROUGH THE APPLICATION OF DIFFERENT METHODS AND CRITERIA
	Zhao Wenzhuo WHAT KIND OF FORESTS HAVE STRONGER COOLING AND SOIL STRUCTURE IMPROVEMENT FUNCTIONS
	Huiru Lv, Guozhong Wang, Wu Chen, Tuchun Zou, Yufeng Zhou, Yongjun Shi IMPACTS OF STAND STRUCTURE CHARACTERISTICS OF THREE FOREST TYPES ON THE INTERNAL ENVIRONMENT AND CARBON SINK FUNCTIONS OF FORESTS
	Juan Xu, Hui Zhang COMPARISON OF SOIL MICROBIAL BIOMASS CARBON AND NITROGEN STOICHIOMETRY BETWEEN DOMINANT WOODY PLANTS AND WIDESPREAD SPECIES ALONG PRECIPITATION GRADIENT
	Ruina Ju, Lei Jiang, Junhui Jiang, Yeqing Ying, Yufei Zhao NUTRIENT DYNAMICS OF LEAF MIXTURES AND ABSORPTIVE-ROOT MIXTURES DURING DECOMPOSITION SYNCHRONOUSLY CHANGES UNDER DEPOSITION OF NITROGEN AND PHOSPHORUS
	Niu Junpeng PINUS MASSONIANA ADAPTS TO LOW-PHOSPHORUS ENVIRONMENTS THROUGH INTERACTION WITH DICRANOPTERIS DICHOTOMA
15:30-16:00	Coffee break
16:00-16:40	Milica Glogovac, Mirjana Todosijević, Katarina Lazarević, Siniša Polovina SUSTAINABLE LAND RESOURCES MANAGEMENT IN VALJEVO THROUGH GEOSPATIAL DATA ANALYSIS
	Jingyue Hu, Dan Hou





	THE FORMATION OF MELANIN IN BLACK BAMBOO RHIZOMES Yufei Zhao, Xuejun Yu, Ruina Ju, Jingyue Hu
	THE BAMBOO FOREST AS A FOOD RESERVE: A KEY CONTRIBUTOR TO THE FOREST "FOUR RESERVOIRS" STRATEGY

Friday, 12.12.2025.

Expert excursion – Bojčinska forest

Gathering from 10:30 a.m., bus leaves at 11 a.m.

Lunch is organised at 2 p.m.

