

ISSN 1821-1046

UDK 630

INSTITUTE OF FORESTRY  
BELGRADE

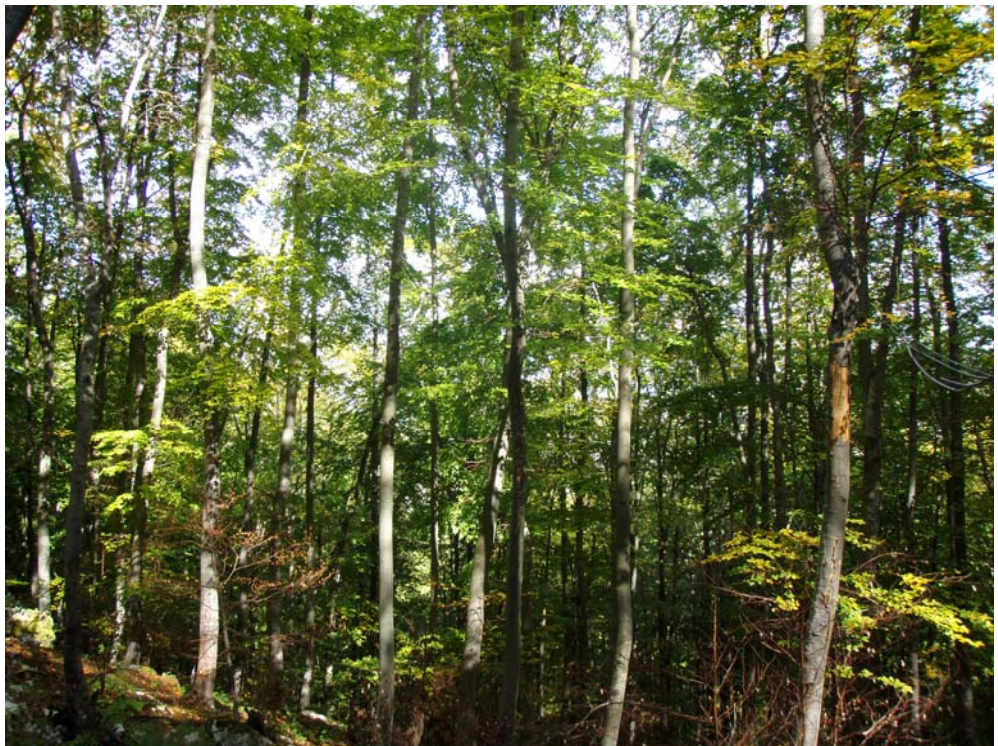


INSTITUT ZA ŠUMARSTVO  
BEOGRAD

**SUSTAINABLE FORESTRY    ODRŽIVO ŠUMARSTVO**

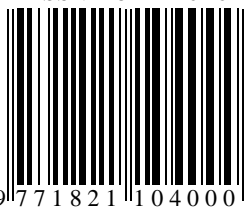
COLLECTION  
TOM 59-60

ZBORNIK RADOVA  
TOM 59-60



**BELGRADE    BEOGRAD**  
**2009.**

ISSN 1821-1046



9 771821 104000

ISSN 1821-1046  
UDK 630

**INSTITUTE OF FORESTRY  
BELGRADE**



**INSTITUT ZA ŠUMARSTVO  
BEOGRAD**

**SUSTAINABLE FORESTRY**

COLLECTION  
TOM 59-60

**ODRŽIVO ŠUMARSTVO**

ZBORNİK RADOVA  
TOM 59-60

**BELGRADE BEOGRAD  
2009.**



**INSTITUTE OF FORESTRY BELGRADE**      **INSTITUT ZA ŠUMARSTVO BEOGRAD**

**PROCEEDINGS**      **ZBORNİK RADOVA**

**Publisher**

Institute of Forestry  
Belgrade, Serbia

**Izdavač**

Institut za šumarstvo  
Beograd, Srbija

**For Publisher**

Ljubinko Rakonjac, Ph.D.

**Za izdavača**

Dr Ljubinko Rakonjac

**Editorial Board**

Mara Tabaković-Tošić, Ph.D.

Institute of Forestry, Belgrade

Dragana Dražić, Ph.D.

Institute of Forestry, Belgrade

Snežana Rajković, Ph.D.

Institute of Forestry, Belgrade

Ljubinko Rakonjac, Ph.D.

Institute of Forestry, Belgrade

Miloš Koprivica, Ph.D.

Institute of Forestry, Belgrade

Radovan Nevenić, Ph.D.

Institute of Forestry, Belgrade

Mihailo Ratknić, Ph.D.

Institute of Forestry, Belgrade

Zoran Miletić, Ph.D.

Institute of Forestry, Belgrade

Milorad Veselinović, Ph.D.

Institute of Forestry, Belgrade

Biljana Nikolić, Ph.D.

Institute of Forestry, Belgrade

Vesna Golubović-Čurguz, Ph.D.

Institute of Forestry, Belgrade

Assoc. Prof. Iantcho Naidenov, Ph.D

Bulgaria

Prof. Nikola Hristovski, Ph.D.

Macedonia

Dr Kalliopi Radoglou, Ph.D.

Greece

**Redakcioni odbor**

Dr Mara Tabaković-Tošić

Institut za šumarstvo, Beograd

Dr Dragana Dražić

Institut za šumarstvo, Beograd

Dr Snežana Rajković

Institut za šumarstvo, Beograd

Dr Ljubinko Rakonjac

Institut za šumarstvo, Beograd

Dr Miloš Koprivica

Institut za šumarstvo, Beograd

Dr Radovan Nevenić

Institut za šumarstvo, Beograd

Dr Mihailo Ratknić

Institut za šumarstvo, Beograd

Dr Zoran Miletić

Institut za šumarstvo, Beograd

Dr Milorad Veselinović

Institut za šumarstvo, Beograd

Dr Biljana Nikolić

Institut za šumarstvo, Beograd

Dr Vesna Golubović-Čurguz

Institut za šumarstvo, Beograd

Assoc. Prof. Dr Iantcho Naidenov

Bugarska

Prof. Dr Nikola Hristovski

Makedonija

Dr Kalliopi Radoglou

Grčka

**Chief Editor**

Mara Tabaković-Tošić, Ph.D.

**Glavni i odgovorni urednik**

Dr Mara Tabaković-Tošić

**Technical Editor and Layout**

Tatjana Čirković-Mitrović, M.Sc.

**Tehnički urednik i prelom teksta**

Mr Tatjana Čirković-Mitrović

**Secretary**

Tatjana Čirković-Mitrović, M.Sc.

**Sekretar Zbornika**

Mr Tatjana Čirković-Mitrović

**Printed in**

150 copies

**Tiraž**

150 primeraka

**Printed by**

Klik print

Beograd

**Štampa**

Klik print

Beograd

All rights reserved. No part of this publication might be reproduced by any means: electronic, mechanical, copying or otherwise, without prior written permission of the publisher.

Belgrade, 2009

Preuzimanje članaka ili pojedinih delova ove publikacije u bilo kom obliku nije dozvoljeno bez odobrenja

Beograd, 2009

**Cover Page:** Author of the Photos Mara Tabaković-Tošić, Ph.D.  
**Naslovna strana:** Autor fotografije dr Mara Tabaković-Tošić

CIP – Каталогизација у публикацији  
Народна библиотека Србије, Београд

630

**SUSTAINABLE Forestry** : collection = Održivo šumarstvo = zbornik radova / glavni i odgovorni urednik Mara Tabaković-Tošić. –2009, T. 59/60– . – Beograd (Kneza Višeslava 3) : Institut za šumarstvo, 2009- (Beograd: Klik print). – 24 cm

Godišnje. – Je nastavak: Zbornik radova – Institut za šumarstvo = ISSN 0354-1894

ISSN 1821-1046 = Sustainable Forestry

COBISS.SR-ID 157148172

**SADRŽAJ CONTENTS**  
**TOM 59-60**

---

<i>Srđan BOJOVIĆ, Biljana NIKOLIĆ, Slobodanka MITROVIĆ, Petar D. MARIN</i> <b>EXPLORATION OF <i>FRAXINUS ORNUS</i> L. BIBLIOGRAPHIC DATA USING PRINCIPAL COMPONENT ANALYSIS (PCA)</b>	7
<i>Zoran MILETIĆ, Bratislav MATOVIĆ, Zoran PODUŠKA, Zlatan RADULOVIĆ, Snežana STAJIĆ, Vlado ČOKEŠA</i> <b>THE MICROORGANISMS POPULATION SIZE OF THE SOIL ORGANIC LAYER AND CHARACTERISTICS OF THE LITTERFALL OF THE COMMON ALDER (<i>ALNUS GLUTINOSA</i> GAERTN.) ON THE RECLAIMED MINE SOIL OF MINING-ENERGY-INDUSTRIAL COMPLEX „KOLUBARA“</b>	19
<i>Ljubinko RAKONJAC, Mihailo RATKNIĆ, Milorad VESELINOVIĆ, Aleksandar LUČIĆ, Vladan POPOVIĆ</i> <b>THE ASSOCIATIONS OF MARSH BLACK ALDER FORESTS IN SOUTHWESTERN SERBIA – ALLIANCE ALNION GLUTINOSAE (MALK. 29) MEIJER DREES 1936</b>	31
<i>Mihailo RATKNIĆ, Ljubinko RAKONJAC, Milorad VESELINOVIĆ, Sonja BRAUNOVIĆ, Svetlana BILIBAJKIĆ, Vladan POPOVIĆ</i> <b>COMMON ASPEN AND BIRCH FORESTS IN PESTER PLATEAU</b>	45
<i>Miloš KOPRIVICA, Bratislav MATOVIĆ, Snežana STAJIĆ, Vlado ČOKEŠA</i> <b>DIAMETER INCREMENT TREND OF THE AUSTRIAN PINE PLANTATIONS IN RAŠKA</b>	63
<i>Georgi TRENČEV, Katia TRENČEVA</i> <b><i>PROCIPHILUS FRAXINIFOLII</i> RILEY (<i>HEMIPTERA, APHIDIDAE, ERIOSOMATINAE</i>) A SPECIES NEW TO THE BULGARIAN FAUNA</b>	79
<i>Vesna GOLUBOVIĆ-ĆURGUZ, Vera RAIČEVIĆ, Ljubinko JOVANOVIĆ</i> <b>TESTING OF CERTAIN PHYSIOLOGIC PROPERTIES OF MYCORRHIZAL FUNGUS <i>AMANITA MUSCARIA</i> (LINN. EX FRIES)</b>	83
<i>Mara TABAKOVIĆ-TOŠIĆ, Miroslava MARKOVIĆ, Snežana RAJKOVIĆ, Milorad VESELINOVIĆ</i> <b>WILDFIRES IN SERBIA – CHANCE OR FREQUENT PHENOMENON</b>	97
<i>Zlatan RADULOVIĆ, Slobodan MILANOVIĆ</i> <b>THE HEALTH CONDITION OF BEECH FORESTS ON ICP SAMPLE PLOTS IN SERBIA</b>	129

*Radovan NEVENIĆ, Zoran PODUŠKA, Ilija ĐORĐEVIĆ, Renata GAGIĆ*

**QUALITATIVE APPROACH IN CONFLICT RESEARCH**

**- FORESTRY vs. NATURE PROTECTION -**

---

141

*Ilija ĐORĐEVIĆ, Radovan NEVENIĆ, Zoran PODUŠKA*

**REFLECTION OF DIFFERENT FINANCING MECHANISMS WITHIN THE**

**NATIONAL PARK “FRUŠKA GORA”**

---

159

UDK 316.485.6 : [630\*9 + 502.1=111  
Original scientific paper

## QUALITATIVE APPROACH IN CONFLICT RESEARCH - FORESTRY vs. NATURE PROTECTION -

*Radovan NEVENIĆ, Zoran PODUŠKA, Ilija ĐORĐEVIĆ, Renata GAGIĆ<sup>1</sup>*

**Abstract:** *Requirements for the use of the natural resources are often in conflict with the aspirations for nature protection. The reforestation is always the focus of the public, journalists, experts and researchers, and frequently the obstacle to the nature conservation. Thus, it is needed to identify, explore and explain the essential conflict situations and manage the conflict. The scientific research methods include the research procedures, criteria, and tools that provide the facts, laws and accurate results of the scientific research.*

*This paper presents the qualitative research methods of defining and managing conflicts in the sector of forestry and nature protection.*

**Key words:** conflict, qualitative research, forestry, nature protection

## KVALITATIVNI METODOLOŠKI PRISTUP U ISTRAŽIVANJU KONFLIKTA U SEKTORU ŠUMARSTVA I ZAŠTITE PRIRODE

**Izvod:** *Zahtevi za korišćenjem prirodnih resursa često su u suprotnosti sa težnjama za konzervacijom prirode. Seče šuma uvek su u fokusu javnosti, novinara,*

---

<sup>1</sup> Radovan Nevenić, Ph.D., Zoran Poduška, graduate forestry engineer, Ilija Đorđević, M.Sc., Renata Gagić, B.Sc., Institute of Forestry, Belgrade, Serbia  
*Translation: Marija Stojanović*

*stručnjaka i istraživača. Često su predstavljene negativno naspram težnji za zaštitom prirode. Svako neslaganje oko načina korišćenja prirodnih resursa vodi konfliktnoj situaciji. Ovako bitne konfliktno situacije posebno je identifikovati, istražiti, objasniti. Konfliktom je neophodno upravljati. Naučno istraživački metodi obuhvataju upravo takve istraživačke postupke, kriterijume i alate koji obezbeđuju utvrđivanje činjenica i zakonitosti i daju pouzdane rezultate naučnih istraživanja.*

*U ovom radu biće predstavljen kvalitativni metodološki pristup istraživanju konflikta u sektoru šumarstva i zaštite prirode.*

**Ključne reči:** *konflikti, kvalitativna istraživanja, šumarstvo, zaštita prirode*

## **1. INTRODUCTION**

The natural resources are the wealth of the mankind and the attributes of the economic, social, political and culturological systems of each country. The forests are the renewable natural resources, which perform numerous functions, that are complementary. However, there are also the functions which are mutually antagonistic.

The most frequent functions, which are mutually antagonistic, are the production and protection functions. The need for the use of the forest resources during and after the economic and political crises poses a threat to the sustainability and permanence of the forest management. The production function imposes the dominant one. The forests should be used in such a manner and to such an extent which will enable the preservation of their biological diversity, the improvement of their productivity level, the ability of regeneration, vitality, as well as their ability to perform the present and future ecological, economic and social functions. These requirements are the subject of the strategies and laws from the domains of forestry and environment. The numerous legal and sublegal acts inevitably lead to the sector cohesion, but also to the collision. In addition, the influence of the local population and non-governmental organisations, was well as the impact on the forest owners and beneficiaries should be also take into account. The collision between the forestry sector and nature preservation is often presented in a negative way, and the cohesion is based on the institutional cooperation. The new participants in the processes of the environmental protection join with the old ones, and form united front of sometimes non-critical views of the common need of the market for the forest products.

The increasing number of the proponents of the environmental protection can project an image that the business is based on the use of the natural resources. Therefore, it is necessary to identify the ecological, economic, social, and political problems which cause the conflict situations between the domain of forestry and nature protections.

The conflict is inextricably bound to the human interaction, and it occurs in almost every environment. The conflict situations are characterized by the essence of conflict, the processes in the conflict situation, and the relations among the participants in the conflict (Walker G., and Daniels S., 1997). The natural resources are the frequent cause of the conflict. The reasons for this situation can be found in the social and cultural heritage and environment, economic and political situation, as well in the differences in the human understanding and expectations.

## 2. THEORETICAL APPROACH

Theory defines the conflict in the different ways, using the different terms to explain the word “conflict“. The terms such as: struggle, pressure, opposition, aspirations, convictions, interaction, cooperation, rivalry, competition, are frequently used in the defining of the conflict situation (Table 1).

**Table 1. Conflict definitions**

Authors	Definition	Key words
Deutsch, 1973	The conflict occurs in all places where the activities which are not well-balanced take place... where the opposing side disturbs, diminishes, prevents, or in some other way makes the activities of the other opposing side less effective.	Disturbance Prevention Efficiency
Wall, 1985	The conflict is the process in which two or more participants are trying to thwart someone else's aims... the conflicts have the easily recognisable elements, such as: mutual dependence, different aims, differences in the understanding.	Aims Dependence Understanding
Pruitt and Rubin, 1986	The conflict implies the divergence of interests or the conviction of the opposing sides that the current aspirations cannot be simultaneously achieved.	Aspirations Conviction Simultaneously
Conrad, 1990	The conflict is the communicative interaction of the persons who are dependent on each other and who feel that their interests are incompatible, inconsistent, or under pressure from others.	Communication Dependence Pressure
Tjosvold and Van de Vliet, 1994	Conflict – incompatible activity – occurs during cooperation and due to the mutual competition... the sides in the conflict maintain cooperation and fight against the competition.	Competition Cooperation Incompatibility
Fogel, Poole and Stutman 1997	The conflict is the interaction of the participants who depend on each other, have the inconsistent goals and disturb each other in achievement of their goals.	Interaction Dependence Inconsistency

Source: (Walker G., Daniels S., 1997)

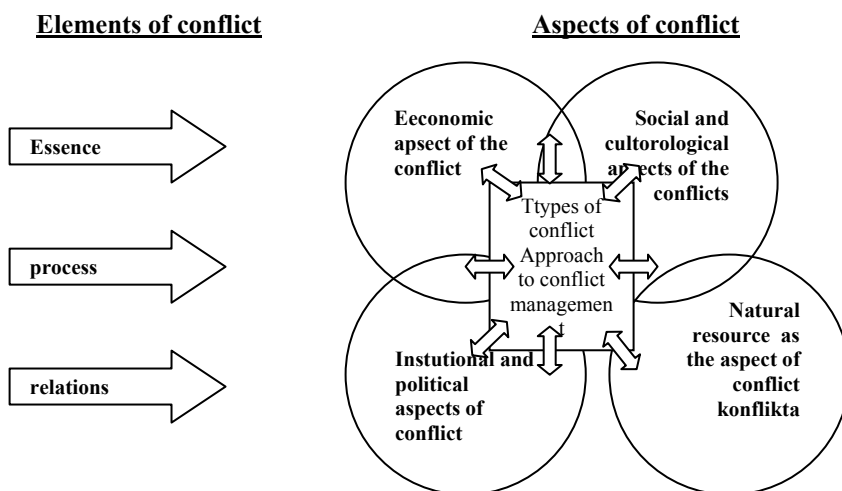
The theory of Walker and Daniels (1997) states that each conflict is the combination of three main elements: **essence** of conflict, **course or process** of conflict, and the **relation** between the participants. These elements of conflict also occur during the conflict management, and are called “progressive triangle“. The content and process are the tangible elements of conflicts,

whereas the relations are based on the personal way of the understanding things. The elements of conflict are presented in the Table 2. The meaning, key words, and questions are attributed to each element of conflict (Niemela J., 2005).

**Table 2.** *The elements of conflict*

Elements of conflict	Meaning	Entries of the elements of conflict
Content	The content or the essence is the controversial issue of the conflict and the tangible element of the conflict situation.	Who? What? Where?
course of conflict	It points to way in which the conflict has taken place and includes the rules and regulations which the sides in conflict have to obey.	How? To whom? Rules
Relations	The mutual relations of the participants in the conflict are determined by the influence, trust, power, authority, respect	Responsibility, Power, Management, Strength, Authority, Influence, Degree of Independence, Degree of connection

In order to study the conflict in the domain of forestry in Serbia, the theoretical frame is found in the progressive triangle of the elements of conflict (Walker G., Daniels S., 1997), in regard of the economic, institutional, culturological and social aspects (Helström E., 2001). The Figure 1 presents the theoretical frame which can be used in the study of the conflict in the domain of forestry.



**Figure 1.** *The theoretical frame of the research of conflict in the domain of forestry.*

The theory shows that economic aspects, culturological views, and the sector policies have a role in the conflict settlement, but also in the creation of the conflict situation, respectively. The conflict situation has three elements: content, course, and the relations, based on which the cause of the conflict, the participants in the conflicts, and the relation between them can be analyzed. The different aspects of the conflict influence the approach to the conflict management. The complex relations are often the obstacle to the solution of the problem, but at the same time serve as a base for the establishment of the mediation, by preventing the further escalation.

### **3. METHOD**

The conflicts in the domain of forestry were researched within the FOPER<sup>1</sup> project, by using the qualitative methodological approach. The qualitative approach was used during the study of the conflict situations in the National Park “Fruska gora“. This national park was selected due to the numerous legal and sublegal acts, which directly refer to the management to the national park, as well as the property relations. The Law on Restitution (Official Gazette of the Republic of Serbia, 46/06), which guaranteed the restitution of the forest to the Serbian Ortodox Church and monasteries, was adopted in 2006. There are 17 monasteries in Mt. Fruska Gora which claim the forests occupying an area of tens of thousands hectares.

The privately-owned forests and forest land occupy an area of 291 hectares of the National Park “Fruska gora“ (Special Management Plan, 2006). Seventy-seven members of the Forrest Association “Beocin“ from Beocin village, are the owners of these forests and forest land. During the qualitative reseach the problem was analysed subjectively, based on the individual interviews and available literature.

The qualitative research is the research process aimed at the understanding of the studied problems from the several perspectives. By the qualitive approach the observed problem is described. The study is conducted in the natural environment, in the aim of the forming of the complex image of the phenomenon which is being researched. The qualitative research approach is analyzed in the Table 3.

---

<sup>1</sup> FOPER – Forest Policy and Economical Education and Research, project aimed at the strengthening of the capacities in the domain of forestry policy and economies in the Balkan countries

**Table 3.** *The analysis of the qualitative research approach*

	<b>Qualitative approach</b>
<b>Purpose</b>	To describe and explain the processes and relations
<b>Scientific concluding</b>	Included. Generates the hypothesis
<b>Sample size</b>	Small sample
<b>Number of the obtained pieces of information /answers</b>	Many
<b>Type of analysis</b>	Subjective interpretation
<b>Approach to problem</b>	In depth, concrete
<b>Probability of repetition</b>	Low
<b>The method of data collection</b>	By recording by voice recorder or writing down the interview in the previously prepared form

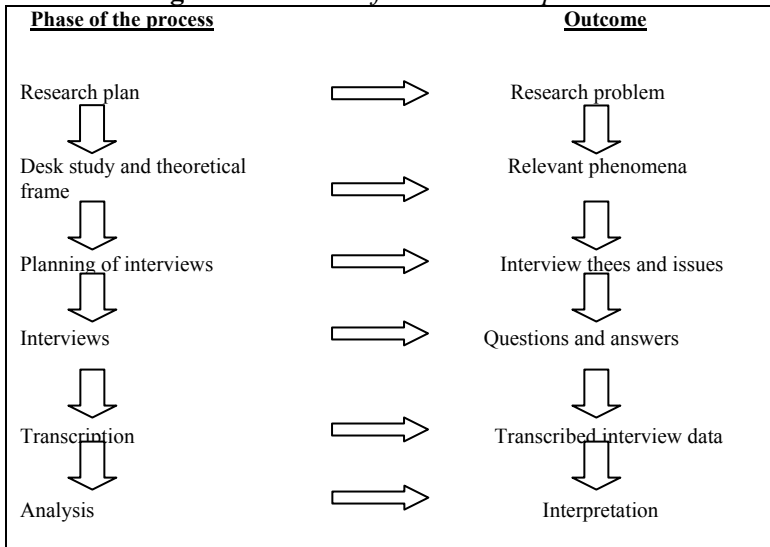
(source Nauman W.L., 2004)

The qualitative research refers to the collection, analysis, and interpretation of the data by observing the human actions and words. In contrast to the quantitative research, which refer to the counting and measuring of the objects, the qualitative researches analyze the meanings, terms, definitions, characteristics, metaphors, symbols and descriptions of the objects. The qualitative research is much more subject than quantitative. It is mainly used for the individual and group interviews with the aim of the collection of the primary data. The qualitative researches are concrete, descriptive, and analyze the problem in depth and in small-sample settings. The interviews were conducted with a few representatives of the target groups. The interview is the complex and altered social process which takes place between two human beings and cannot be repeated (Walker R.,1985).

During the research of the conflict between the domain of forestry and nature protection by the quantitative methodological approach the general scientific method of modelling was used (Sesic B., 1984). The professional and scientific literature, as well as the sources obtained from the Internet, were used as the source of the data. The literature and data are mainly analyzed by the use of the following special scientific methods (Mihajlovic D., 2004): analytical-synthetic method, the method of abstraction and concretization, the method of generalisation and specialisation, the method of classification, and the methods of induction and deduction.

The qualitative research has the clearly defined phrases and corresponding results. The Figure 2 presents the phases of the research process.

**Figure 2. Scheme of the research problem**



The phases are planned in a great detail, and there are the corresponding results of each phase.

#### 4. RESULTS

In forestry, as mainly nature scientific discipline, there is the increasing need for the socio-economic researches, which is the result of the fact that man is inextricably bound to nature. The increasing impact of the society and economy on the environment promotes the socio-economic researches. The socio-economic researches are the set of methods which the research scientists systematically apply in order to gain knowledge on the society based on the scientific facts. These researches are aimed at the creation of the study of men, their needs, behaviour, beliefs, interactions and institutions. Given the fact that many decisions made by the political leaders are not followed by the adequate social researches, it is needed to point to the researches by the qualitative methodological approach (Nauman W.L., 2004). Each research should be followed by the research project. By meeting the requirements of all phases of the research process and monitoring of it, the expected results are obtained.

**Research plan** – The research topic is defined by the ordered regional<sup>1</sup> research of the conflicts in the domain of forestry. Based on the defined research topic the research plan, generated by the research problem, is made.

<sup>1</sup> Within the FOPER project the research of the conflict in the domain of forestry was financed

**Gaining knowledge on the theory of research problem** The available scientific and professional literature and the sources obtained from the Internet were researched. By studying the results of the theory the relevant situation with the elements of conflict in the National Park „Fruska gora“ was recognized. All participants of conflicts were identified. The direct participants in the conflict are:

- National Park ”Fruška Gora”, as the Public Enterprise, which manages the protected nature reserve based on the Law on National Parks (Official Gazette of the Republic of Serbia 39/93), i.e. Nature on Nature Protection (Official Gazette of the Republic of Serbia, 36/09);
- The Forest Association ”Beocin“, as the specific form of the cooperation between the owners of the privately-owned forests. The members of the Forest Association are the allied owners of the forests covering an area of the National Park “Fruska Gora“ (The Special Forest Management Plan, 2006).
- The Institute for Nature Conservation of Serbia, as the unique institution in the Republic, the main task of which is to preserve and improve the condition of the national nature reserves. The indirect participants in the conflict are:
- The Ministry of Forestry, Agriculture, and Water Management and the Ministry of Environment and Spatial Planning, as the executive authority which creates and implements the laws and strategies.

The elements which define the conflict among the participants are:

- **The essence of conflict:** The disagreement about the manner in which the meadow, covering an area of 17 hectares, is managed. The meadow is privately-owned by the Forest Association “Beocin“. It is located in the protected zone of the National Park “Fruska gora“, in the vicinity of the regional “Partisan Road“. The owners are required to manage the meadow in a sustainable manner. This obligation is imposed on them by the Institute for Nature Conservation, as the answer to the appeal which the Forest Association made to the Institute for Nature Conservation and the management of the National park and which refers to the ability to manage the meadow in this way, so that both owners and visitors can benefit from it. The meadow is a favourite picnic area of the citizens of Novi Sad. On the other hand, it is the site of numerous protected and rare herbaceous species. It can be noticed that in this instance the requirements for the economic benefit clashes with the requirement for the complete conservation of the private ownership within the National Park. The management of the National Park offered the service of the maintenance of the meadow. The price of the service was much higher than the financial solvency of the Forest Association. Therefore, the limit of the right to use the private

ownership was imposed, and in turn the expensive service of the maintenance was offered.

- **The process of the conflict:** The process domain of the conflict is characterized by the activities which enable the reforms in the legislation. The creation of the Law on Forests, which takes into account the private ownership, is under way. The Law on Nature Conservation, by the positive interpretation of which the “compensation for the deprivation or the limiting of the right of the usage“ of the private ownership in the protected zones is enabled, is adopted. There are the clearly visible changes in the manner in which the private ownership in the National Park “Fruska gora“ is managed, and the plan for the management of the Forest Management Unit “Forest Association“ – Beocin, owned by the Forest Association from Beocin village, is made in 2007.
- **Relations among the participants:** The Ministry of Agriculture, Forestry and Water Management, the Ministry of Environment and Spatial Planning, the Institute for Nature Conservation of the Republic of Serbia, Regional Department for Environment Protection and Sustainable Development, Forest Association „Beocin“, local governments, and academic and scientific-research organisations, are involved in the management and use of the National Park “Fruska Gora“. It was concluded that the participants slowly and safely project an image of their communication as advanced. The conflict is in the latent phase, hidden from public view. The participation of the political parties in the management of the natural resources is clearly visible. The relation element of the conflict is the integral part of the conflict management, and it is expressed by: mediation, dialogue, cooperation, and education.

There are following aspects of conflict: institutionally-political aspect, economic, social, and culturological aspect. In addition, the conflict can be viewed in regard to the natural resources. The natural resource can be under the protection regime, or under the regular management regime.

In regard to policy making, the conflict is observed as the disagreement over the determinants (criteria and priorities) of the political decisions (Walker Daniels 1997). The conflict is associated with the lack of information, disinformation, and the different interpretations of the available data. It was reported that the sides in the conflict had the different rating scale of the information and attitudes. For instance, some phenomena are considered to be rational by some people, but they are considered to be irrational by others.

Many conflicts between the forestry and nature protection are caused by the economy. The owners or users of the natural resources claim that they are entitled to offer their ownership to the market, regardless of the category of protection.

The categorization and structure of the protected areas are the frequent topics of the debates, but at same time the sources of the numerous conflicts.

It is hard to estimate and compare the social and culturological benefits of forests with the economic benefit. The forest is traditionally of great importance to the owner or community. The forest is inherited, but rarely sold. The issues of the ownership and the right of usage is the frequent cause of the conflict. The tradition, as the part of the sociological and culturological aspects of the natural resources management, is clearly visible in the behaviour of all actors.

After the recognition of the relevant situation and defining the elements and participants in the conflict, based on the principles of the qualitative methodological approach, the study case was selected as the technique for the data collection. The case study method<sup>1</sup> implies the use of the scientifically formulated occurrence model as a starting point and leads to the reconstruction of the current or to the construction of the new model (Miljevic M., 2004). The study case is the concrete, descriptive method, and analyzes the problem in depth.

**Interview planning** – In harmony with the research process, and after the observation of the elements and participants in conflict, the specification of case study, which refers to the research questions, theoretical frame, hypotheses, population, and the size of the sample, as well as to the time needed for the research, is made.

The specification of case study is also called “case study protocol“ (Miljevic M., 2004). The integral part of the protocol is also the form with the questions which the examiner will put to the examinee.

The questions are focused on the previously defined topic, and the participants in the interview are informed in advance about the topic of the interview, and the agreements about the time, place and duration of the interview are made.

The research refers to the analyses of the type and intensity of conflict, as well as the precondition for the conflict situation settlement. Along with the characteristics and elements of conflict, it is needed to define the participants in conflict and their mutual relations. The participants in conflict are characterized by the attitude towards problem, authority, power, and status in the decision-making process. The research is focused on the study of the connections and relations between the participants in conflict. Therefore, all processes are inter-related and dynamic. Based on these requirements, the questions are formulated. The questions are classified as main and auxiliary. The main questions should raise the answers on the essence, processes and relations in the conflict situation. If the examinee does not provide the sufficient scope of information to

---

<sup>1</sup> In the methodological literature the terms "case method" and "case analysis" are mentioned

the questions, the attitudes on the missing information about conflict are initiated by the secondary questions.

**The interview** should be planned so that the three surveys of the basic data, based on the answers of the examinee, are formed:

- 1) The chronology of events;
- 2) The survey of the most important actors;
- 3) The survey of the possible and available sources of data, particularly written ones, out of which some are also collected.

The interview plan resulted in the creation of the forms with questions. The examinees are selected by the principle of general knowledge, i.e. by the method of “snowball“ sampling<sup>1</sup>.

Conducting an interview – The interview as the technique of the collection of the primary data was selected. By the definition: “The interview or scientific conversation is the technique of data collection by the direct oral or personal communication of the research scientist and examinee“ (Milevic 2004). The interview as the research instrument is conducted personally. The examiner and examinee participate in the individual interviews. The interview requires the direct and mutual activity and interaction. The answers of the examinees are recorded by the voice recorder.

The questions in the interview are aimed at the more efficient discovery of the facts and personal opinions of the examinees about the certain topic. In regard to the very technique of conducting an interview, it is needed to respect certain rules, such as:

- Respecting the scheduled time, place, and duration of the interview;
- Positive attitude of the research scientist towards the examiner and topic;
- Suitable clothes and tidy appearance;
- The examinee should not be interrupted often, but the examiner should direct the course of the interview in a subtle way;
- The examinee should not feel as being interrogated, but as an expert;
- Check the functionality of the voice recorder, batteries and memory in advance;
- The informal conversations should be held after the interview, but these conversations should be used for the resolving of the ambiguities.

The participants in the interview, i.e. the examinee first answer to the common questions. The aim of the interview is the identification and definition of the opinions and views of the topic, as well as the determination of the level of connection based on research sample.

---

<sup>1</sup> “Snowball method” – It is used in the aim of the finding of the most adequate examinees. The claim for the selection of the examinees is made to the person who is in charge of the company or organisation : (to minister, director of the National Park or of the State Enterprise, or the president of the Association) who nominate their associates who are most acquainted with the topic.

The quality of answers and results directly depends on the skill and experience of the examiner. Along with the common questions, the auxiliary questions, aimed at finding the data which were omitted by the examiner.

The answers to the questions which were put are obtained as a result of interview.

**Transcription** – The recorded interviews are later transcribed, i.e. transformed into the textual form, in the logically and gramatically correct form.

**Analysis** – During the research, the content, form and manner in which the messages are exchanged, i.e. the exchange of the opinions between the examiner and examinees, are studied. By analyzing the answers, the information of the attitudes of the examinees is obtained.

The following elements are analyzed: objectivity of the attitude, content, scope, and authenticity of the attitude. The direction of the examinees to the positive or negative attitudes is reported. It is important to classify the attitudes as the “initiative“ or “confrontation“. The intensity of the attitude pointed to the fact that the conflict is in the latent phase, “hidden from public view“. Based on the criterion of attitude stability, it was concluded that the members of the same side in the conflict are not homogenous, but they have the variable characteristics of the interrelations. Some attitudes have the form of the momentary reaction to the question.

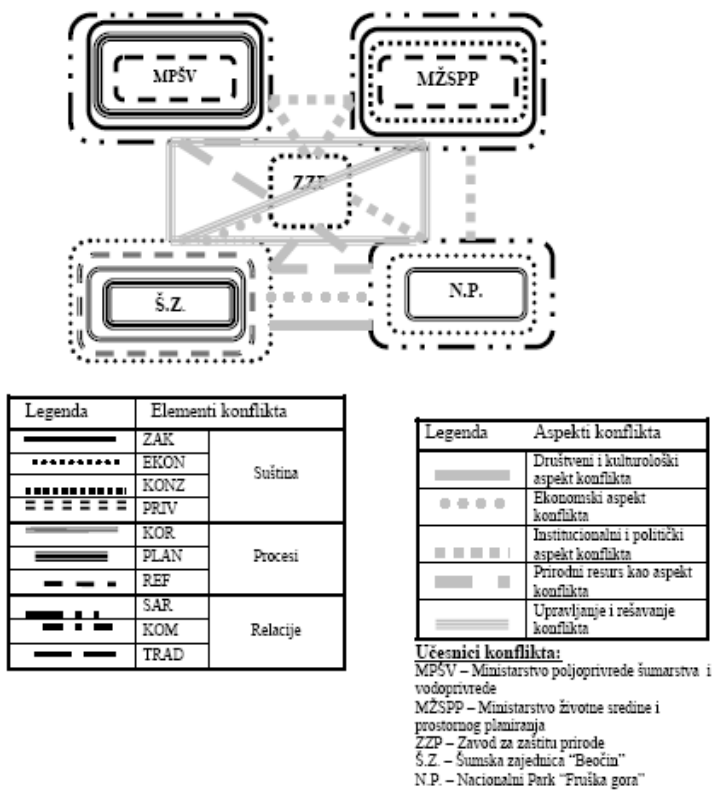
Interpretation - Result of the analysis was the interpretation of the obtained answers. The answers, which were interpreted, were divided into several categories. The categories of the answers were collected by the certain element of conflict and are presented in Table 4.

**Table 4. Categories of the answers by the elements of conflict**

Answer categories	Elements
<b>LEG</b> – Legislation: Owning to the numerous laws and sublegal documents the implementation of the Law on Forests, Law on Environment Protection, and Law on National Parks, etc, is hindered.	<b>Substance of conflict</b>
<b>ECON</b> – Economic aspect: Economic aspect is particularly emphasized by the members of the Forest Association „Beocin“, since the members consider that they are deprived of the possibility to use their own ownership. The State Enterprise National Park “Fruska gora“ is focused on the forest in the protected nature reserve as the source of income. The economic aspect is stated as the essence of conflict.	
<b>CONS</b> – Conservation requirements within National park. These requirements are imposed by the Law on National Parks and Law on Environment Protection, i.e. by the Law on Nature Conservation. The Institute for Nature Conservation is the initiator of the conservation. In spite of the fact that these requirements are prescribed by the law, they are often in the collision of both the trustees of the National Parks, and the owners of the private properties. In contrast to this requirement, there is the economic aspect of National Park management (ECON). The conservation requirements are used as the arguments by all sides in the conflicts.	
<b>PRIV</b> – Valuation of the private ownership of forests and forest land. It is the essential element of conflict. As the owners very well know the value of their own property, they expect to gain the adequate income. However, they are omitted from the participation process during the creation of managing plans. They are proud of their property, traditionally bound in the Association and focused on the forest as the source of income. They consider the limit of the use and imposing of the additional costs as the pressure on personality, family, and community as the	

Answer categories	Elements
negation of the traditional values.	
<p><b>UT</b> – utilisation: the processes which influence the utilisation of forest and forest land. There are numerous legal and sublegal documents which affect the National Park management. The economic benefit is in collision with the requirement for conservation. The usage refers to the felling and creation of logs and fuel wood. The profit obtained in this way is not sufficient for the functioning of National Park and Forest Association. Therefore, the participants expect the procedure changes to take place, which will be beneficial to all. These expectations were submitted to the responsible ministries, and partly to the local government.</p>	<b>Process</b>
<p><b>PLAN</b> – the visible changes in the private ownership management. The Plan of Managing Forest Management Unit “Forest Association“, was adopted in 2006.</p>	
<p><b>REF</b> – reformative approach to the legislation in domains of forestry and nature protection. The need and will for the improvement of the sector legislation is clearly visible. By improvement and synchronisation of the legislation many conflict situations will be prevented. The Ministry of Agriculture, Forestry and Water Management, has initiated the process of adoption of the new sector laws. The right of the private property is clearly recognized in the Law Draft.</p>	
<p><b>COOP</b> – cooperation. The horizontal cooperation of the Ministry of Agriculture, Forestry and Water Management and Ministry of Environment Protection is clearly visible, but the synchronized legislation has not been adopted yet.</p> <p>The cooperation of the management of National Park and Forest Association, based on the mutual respect, with the visible relation of the stronger and more powerful side to the weaker side, is well-expressed</p> <p>The cooperation of the management of the National Park and Institute for Nature Conservation is at the high professional level, but the each side favours its position. There is the expressive need for profit in the management of the National Park, whereas the Institute for Nature Conservation has the conservation approach to the National Park management.</p> <p>The relation between the Institute for Nature Conservation and Forest Association is characterized by the complete trust and respect. The Association consults the Institute about the problem of the sustainable use of the meadow. The Institute issues the abiding prescription about the way in which the meadow is preserved. The implementation of this rule requires the considerable financial means, but does not direct Association to the positive decrees which can promote the use of the sustainable private ownership management. These rules are listed in the Law on Environmental Protection (Article 63), and the compensation for deprivation or limitation of the use of the private property in the protection zone is anticipated.</p>	<b>Relations</b>
<p><b>COMM</b> – mutual communication is emphasized as the key to the conflict management. The members of the Forest Association have the impression that they have been omitted during the planning and decision-making in the National Park. The management of the National Park laconically speak about the communication with the members of the Forest Association, and claim that “there are no problems with them“.</p>	
<p><b>TRAD</b> – traditional values are reflected in the attitudes of the management of the National Park, as well as in the attitudes of the members of the Forest Association. The examinees from the National Park use the phrases about the “necessity and superiority of the forestry profession in the protected nature reserves management“, since “only the foresters have the sufficient scope of knowledge and skills“, which can be appropriately used in the nature reserve management. The members of the Forest Association “Beocin“ emphasize the multicentury tradition of forest and forest land management. They are proud of their forest and the chronology of the creation of the stable Association.</p>	

By the interpretation of the answers the categories of the answers, which point to the element of conflict and to the aspects of conflict situation, were defined. The model of the conflict situation in the National Park “Fruska gora“ is presented on the Graph 3. By stating the elements of conflict, but from different aspects, the role of the participants in conflict, is presented.



**Figure 3.** Participants, elements and aspects of conflict

## 5. CONCLUSION

By using the qualitative research method, the case study and interview, as the techniques of the data collection, were selected. The interviews in the qualitative research are based on the relation between of the examiner and examinee. The examiner is the person who creates their own frame of values and beliefs, constructs the meanings and explains the events in their environment, based on the real life.

During the interview the research scientist is faced up with the following questions: How much direct/indirect should I be?; Is is appropriate to always put the open questions? It is desirable to disagree with the opinion of the examinee? However, the structure of the examination in the qualitative research is not rigid, and the research scientist should bear in mind that there are broad questions, which might not always bring the crucial conclusions, but enable the

creation of the atmosphere in which the examinees will feel comfortable, and gain the expression that their opinion and experience are respected and valued. The situations, in which the examinees gain the impression of being interrogated, should be neglected. There are no rules on the use of the open and general questions, or on the use of main or secondary questions 5, or on the disagreement over the expressed attitudes, in the personal interviews. This decision is made by the research scientist, and it is based on the relation which it built with the examiner. Sometimes it is possible to debate in the manner “pro and cons“, or discuss some topic with someone more than it is usual. It is important to have the clear objectives of the interview. The aim is to recognize whether the theories or values of the persons who were interviewed respond to the research question based on the accepted theory.

The method of the case study undoubtedly has the important advantages in practice. The concept on the research of the totality based on the individual elements has an important advantages over other methods. The research scientist is directed to the various sources and data. By the method of case study the individual cases, small groups, i.e. units, or the very organisation, are researched. The method of case study can be used for research of the past, current and future cases. The method of case study can be used for various purposes – scientific (used for the scientific orientation, description, classification, discovery, explanation, anticipation), educational, and practical. The problem, i.e. the subject of research should be topical, very important, or typical phenomenon. By rule, the selected phenomenon is researched in the environment in which at a certain moment it is most expressive or typical, by some characteristics.

As in all other researches, in the initial stage, the scientific fond is used and the previous data on the sources of data and very phenomenon are collected, so that the project of research can be made. The available written information from the professional and scientific magazines are used for data collection. By the personal contacts with the experts and well-informed persons the direct insight in the situation at the scene where it takes places is obtained. Based on the statement of the examiner and available literature, the image on the chronology of events, survey of the most important actors, and their mutual relations, is formed. The theory and pieces of information which were collected are varified by the interview. The examinees are selected by the principle of the knowledge of the certain subjects. The processession, analysis and synthesis of data lead to the descriptive version of the report. The report is made of the chronology of events and their description, as well of interpretation of the answers, without taking stances or expressing opinions. The method of case study is not only very favourable and efficient in the researches conducted in depth and for mainly scientific purposes, but very applicable in the action research, for the revision, and operative policy, as well. During the research

process the scientists use different scientific-research methods and techniques. As a result of the scientific-research methods, the science is the human activity directed towards gaining new knowledge on the reality. In order to ensure the objective authenticity of the obtained results, it is needed to apply the known and verifiable research methods (Neuman W.L., 2006). The selected qualitative research methods enable the authentic presentation of the research results.

The synergy of the nature and social sciences and their scientific methods enables the gaining authentic, or probable knowledge on the natural resources and human impact on the forest ecosystems and environment.

## REFERENCES

Helström, E. (2001). Conflict Culture – Qualitative Comparative Analysis of Environmental Conflicts in Forestry, Silva Fenica, Monographs 2.

Mihajlovic, D. (2004). Methodology of the Scientific Research. Belgrade, Faculty of Organisational Sciences. (*Original: Metodologija naučnih istraživanja. Beograd, Fakultet organizacionih nauka.*)

Miljevic, M. (2007). Script from the Methodology of Scientific Paper. Pale, University in Eastern Sarajevo, The Faculty of Philosophy. (*Original: Skripta iz metodologije naučnog rada. Pale, Univerzitet u Istočnom Sarajevu Filozofski Fakultet.*)

Neuman, W.L. (2006) Social Research Methods : Qualitative and Quantitative approaches, 6th ed, United States of Amerika, University of Wisconsin at Whitewater.

Niemela, J et al. (2005) Identifying, managing and monitoring conflicts between forest biodiversity conservation and other human interests in Europe, Elsevier, Forest Policy and Economics 7.

Special Management Plan (2006). Forest Management Unit “Forest Association“ – Beocin. The University of Belgrade, The Faculty of Forestry. (*Original: Posebna osnova gazdovanja (2006). G.J. “Šumska zajednica“ – Beočin. Univerzitet u Beogradu, Šumarski fakultet*)

Official Gazette, Republic of Serbia, 46/06, 2006. Law on Restitution of the Property to the Churches and Religious Communities, Official Gazette, Belgrade. (*Original: Sl. Glasnik, R.S., 46/06, 2006. Zakon o vraćanju (restituciji) imovine crkvama i verskim zajednicama, Službeni glasnik, Beograd*)

Official Gazette, Republic of Serbia, 36/09, 2009. The Law on Nature Conservation, Official Gazette, Belgrade. (*Original: Sl. Galsnik, R.S., 36/09, 2009. Zakon o zaštiti prirode, Službeni glasnik, Beograd*)

Official Gazette, Republic of Serbia R.S., 39/93, 1993. The Law on National Park, Official Gazette, Belgrade. (*Original: Sl. Glasnik, R.S., 39/93, 1993. Zakon o nacionalnim parkovima, Službeni glasnik, Beograd.*)

Sesic, B. (1988). General Methodology. Belgrade, Scientific Book. (*Original: Šešić, B. (1988). Opšta metodologija. Beograd, Naučna knjiga.*)

Walker R. 1985 Applied qualitative research Gowr England

Walker G., Daniels S., 1997 Foundation of natural resource conflict: Conflict teory and public policy, Oregaoon State University, USA

## **QUALITATIVE APPROACH IN CONFLICT RESEARCH - FORESTRY vs. NATURE PROTECTION -**

*Radovan NEVENIĆ, Zoran PODUŠKA, Ilija ĐORĐEVIĆ, Renata GAGIĆ*

### **Summary**

The conflict is inextricably bound to the human interaction, and it occurs in almost every environment. The conflict situations are characterized by the essence of conflict, the processes in the conflict situation, and the relations among the participants in the conflict. The natural resources are the frequent cause of the conflict. The reasons for this situation can be found in the social and cultural heritage and environment, economic and political situation, as well in the differences in the human understanding and expectations.

The conflicts in the domain of forestry were researched by using the qualitative methodological approach. The qualitative approach was used during the study of the conflicts in the National Park "Fruska gora". During the qualitative research method the problem was analyzed subjectively, based on the individual interviews and available literature.

In forestry, as mainly nature scientific discipline, there is the increasing need for the socio-economic researches, which is the result of the fact that man is inextricably bound to nature. The social researches are the set of methods which the research scientists systematically apply in order to gain knowledge on the society based on the scientific facts. These researches are aimed at the creation of the study on men, their needs, behaviour, beliefs, interactions and institutions. Given the fact that many decisions made by the political leaders are not followed by the adequate social researches, it is needed to point to the researches by the qualitative methodological approach.

# KVALITATIVNI METODOLOŠKI PRISTUP U ISTRAŽIVANJU KONFLIKTA U SEKTORU ŠUMARSTVA I ZAŠTITE PRIRODE

*Radovan NEVENIĆ, Zoran PODUŠKA, Ilija ĐORĐEVIĆ, Renata GAGIĆ*

## Rezime

Konflikt je neodvojivi deo ljudske interakcije, dešava se u gotovo svim okruženjima. Konfliktne situacije karakteriše suština konflikta, procesi u konfliktnoj situaciji i relacije među učesnicima konflikta. Prirodni resursi čest su objekat konflikta. Razloge nalazimo u socijalnom i kulturnom nasleđu i okruženju, ekonomskoj i političkoj situaciji, razlikamo u ljudskim shvatanjima i očekivanjima.

Istraživanja konflikata u sektoru šumarstva sprovedena su putem kvalitativnog metodološkog pristupa. Kvalitativni pristup je korišćen tokom studije slučaja o konfliktima u Nacionalnom parku „Fruška gora“. Prilikom kvalitativnog istraživačkog pristupa problem je analiziran subjektivno, na osnovu individualnih intervjuua i postojeće literature.

U šumarstvu, kao prevashodno prirodnoj naučnoj disciplini, sve više je prisutna potreba za socioekonomskim istraživanjima. Razloge nalazimo u neraskidivom odnosu čoveka i prirode. Sve veći uticaj društva i ekonomije na životnu sredinu podstiče primenu socioekonomskih istraživanja. Socijalna istraživanja su skup metoda koje istraživači sistematski primenjuju da bi proizveli znanja o društvu koja su zasnovana na naučnim činjenicama. Imaju za cilj izradu studije o ljudima, njihovim potrebama, ponašanju, verovanju, njihovim interakcijama i institucijama. S ubeđenjem da mnoge odluke političkih lidera nisu ispraćene adekvatnim društvenim istraživanjima, potrebno je ukazati na istraživanja putem kvalitativnog metodološkog pristupa.

## Reviewer:

Ljubinko Rakonjac, Ph.D., Institute of Forestry, Belgrade  
Dragana Dražić, Ph.D., Institute of Forestry, Belgrade